

STATE OF WISCONSIN
BEFORE THE WISCONSIN EMPLOYMENT RELATIONS BOARD

In the Matter of the Petition of
MILWAUKEE DISTRICT COUNCIL 48,
AMERICAN FEDERATION OF STATE, COUNTY
AND MUNICIPAL EMPLOYEES, AFL-CIO
Involving Employees of
CITY OF MILWAUKEE, Employed
in the MUSEUM BOARD

Case III
No. 8597 ME-7
Decision No. 6249

DIRECTION OF ELECTION

Milwaukee District Council 48, American Federation of State, County and Municipal Employees, AFL-CIO, having petitioned the Wisconsin Employment Relations Board to conduct an election, pursuant to Section 111.70 of the Wisconsin Statutes, among certain employees of the City of Milwaukee employed in the Museum Board, and a hearing on said petition having been conducted at Milwaukee, Wisconsin on May 7 and 11, 1962, at the City Hall, Milwaukee, Wisconsin, the full Board being present; and the Board, having considered the evidence and arguments of the parties and being satisfied that a question has arisen concerning representation for said employees of the Municipal Employer;

NOW, THEREFORE, it is

DIRECTED

That an election by secret ballot shall be conducted under the direction of the Wisconsin Employment Relations Board within ninety (90) days from the date of this Directive among all regular employees employed by the City of Milwaukee in the Museum Board, excluding confidential and supervisory employees and executives who were employed by the City of Milwaukee on February 1, 1963, except such employees as may prior to the election quit their employment or be discharged for cause, for the purpose of determining whether a majority of such employees desire to be represented by Milwaukee District Council 48, American Federation of State, County and Municipal Employees, AFL-CIO, and its Local No. 426.

Given under our hands and seal at the City
of Madison, Wisconsin, this 28th day of
February, 1963.

WISCONSIN EMPLOYMENT RELATIONS BOARD

By Morris Slavney /s/
Morris Slavney, Chairman

J. E. Fitzgibbon /s/
J. E. Fitzgibbon, Commissioner

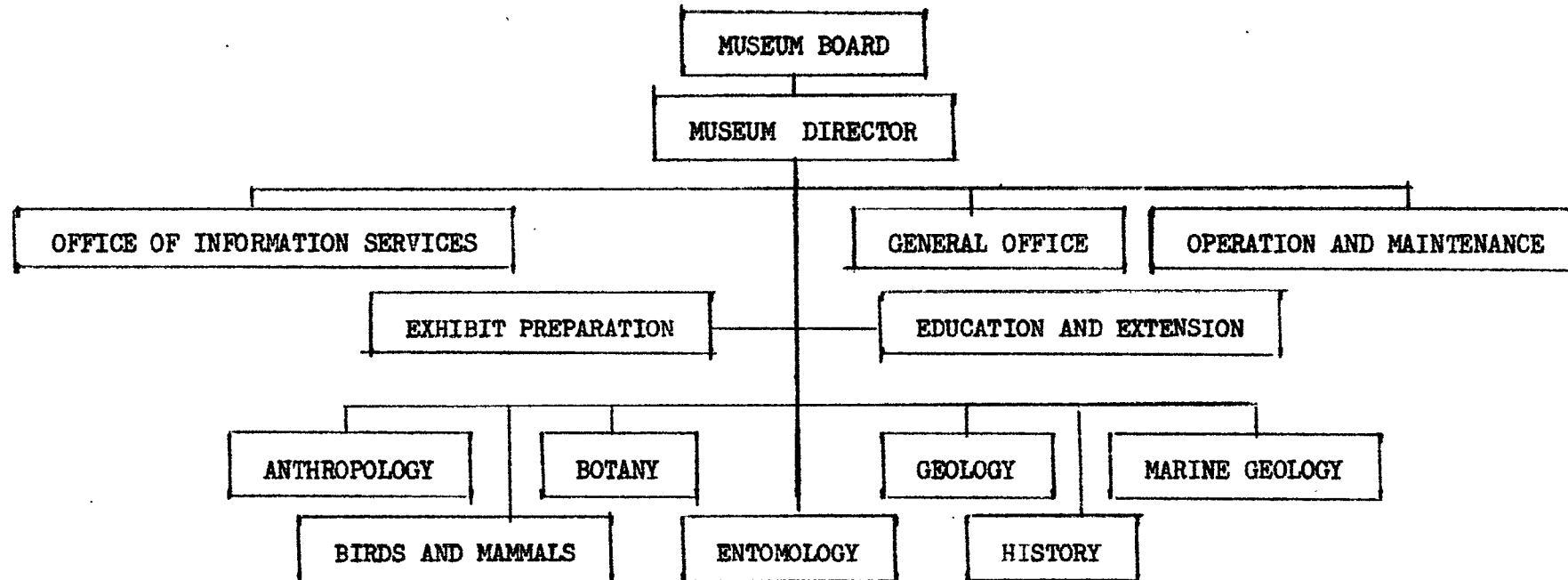
Arvid Anderson /s/
Arvid Anderson, Commissioner

No. 6249

MEMORANDUM ACCOMPANYING DIRECTION OF ELECTION

Milwaukee District Council 48 petitioned the Board to conduct a separate election among certain employees of the City of Milwaukee employed in the Public Library and Museum Board. The request was contained in a petition filed by said labor organization, which petition also related to other employees of the Municipal Employer. The Public Library and Museum Board are two separate departments of the Municipal Employer and cannot as such be combined in a single voting group.

The organization of the Public Museum is as follows:



Eligibles

The parties stipulated that twelve (12) positions in the Public Museum were supervisory and one (1) position was confidential and therefore should be excluded from the eligibles. Eight (8) positions, occupied by fourteen (14) incumbents, are in issue. The Municipal Employer contends that two (2) positions are craft and that the remaining six (6) are supervisory. The following positions and incumbents thereof are to be excluded from the eligibles:

MUSEUM DIRECTOR

(s) Museum Director (Borkegi)
(c) Clerk Steno. IV (Reinhold)

OPERATION & MAINTENANCE

(s) Bldg. Maint. Supvr. II (Gillan)
(s) Bldg. Maint. Supvr. I (Hanson)
(s) Cust. Work Supvr. I (Wozniak)
(s) Museum Guard (Wesolowski)
(s) Bldg. Maint. Foreman (Rosenan)

GEOLOGY

(xs) Curator IV (Nelson)

MARINE ZOOLOGY

(xs) Curator IV (Dickenson)

OFFICE OF INFORMATION SERVICES

(s) Curator II (MacBrian)

EXHIBIT PREPARATION

(s) Museum Artist IV (Gebhardt)

ANTHROPOLOGY

(xs) Curator IV (Ritzfenthaler)

BOTANY

(xs) Curator IV (Fuller)

HISTORY

(xs) Curator IV (Wolff)

Voting Groups and Units

The Board concludes that the positions of Printer and Casemaker are "c labor organization claims to represent any of said "craft" employees and therefor any voting group.

Milwaukee District Council 48 and its Local 426 desire to include all employees in the Public Library as one voting group. The Public Library and the departments and therefore each constitutes a separate voting group. If a majori desire to be represented by Milwaukee District Council 48 and its Local 426, the appropriate collective bargaining unit. The following positions and incumbents voting group:

- (s) Indicates positions agreed to be supervisory.
(c) Indicates position agreed to be confidential.
(xs) Indicates positions found by Board to be supervisory.

OFFICE OF INFORMATION SERVICES

Curator I
Museum Photographer
Photographer

GENERAL OFFICE

Admin. Asst. I
Clerk Steno. III, I
Clerk II
Librarian I

OPERATION & MAINTENANCE

Custodial Worker II, I
Museum Guard II, I
Maint. Mechanic

EXHIBIT PREPARATION

Museum Artist III, II, I

EDUCATION AND EXTENSION

Clerk Steno. II
Curator I
Museum Sc. Asst. III
Clerk II
Clerk Typist II
Film Technician II, I
Truck Driver (Under 3½ tons)

ANTHROPOLOGY

Curator I

BIRDS AND MAMMALS

Museum Artist II, I
Taxidermist II, I

BOTANY

Curator II

ENTOMOLOGY
(None)

GEOLOGY

Curator I

HISTORY

Curator I
Museum Sc. Asst. III
Museum Artist III

MARINE ZOOLOGY
(None)

Dated at Madison, Wisconsin this 28th day of February, 1963.

WISCONSIN EMPLOYMENT RELATIONS BOARD

By Morris Slavney /s/
Morris Slavney, Chairman

J. E. Fitzgibbon /s/
J. E. Fitzgibbon, Commissioner

Arvid Anderson /s/
Arvid Anderson, Commissioner