

BEFORE THE WISCONSIN EMPLOYMENT RELATIONS BOARD

Case III
No. 8597 ME-7
Decision No. 6250

Milwaukee District Council 48, American Federation of State, County and Municipal Employees, AFL-CIO, having petitioned the Wisconsin Employment Relations Board to conduct an election, pursuant to Section 111.70 of the Wisconsin Statutes, among certain employees of the City of Milwaukee employed in the Tax Department, and a hearing on said petition having been conducted at Milwaukee, Wisconsin on May 7 and 11, 1962, at the City Hall, Milwaukee, Wisconsin, the full Board being present; and the Board, having considered the evidence and arguments of the parties and being satisfied that a question has arisen concerning representation for said employees of the Municipal Employer;

DIRECTED

Given under our hands and seal at the City
of Madison, Wisconsin, this 28th day of
February, 1963.

By Morris Slavney /s/
Morris Slavney, Chairman

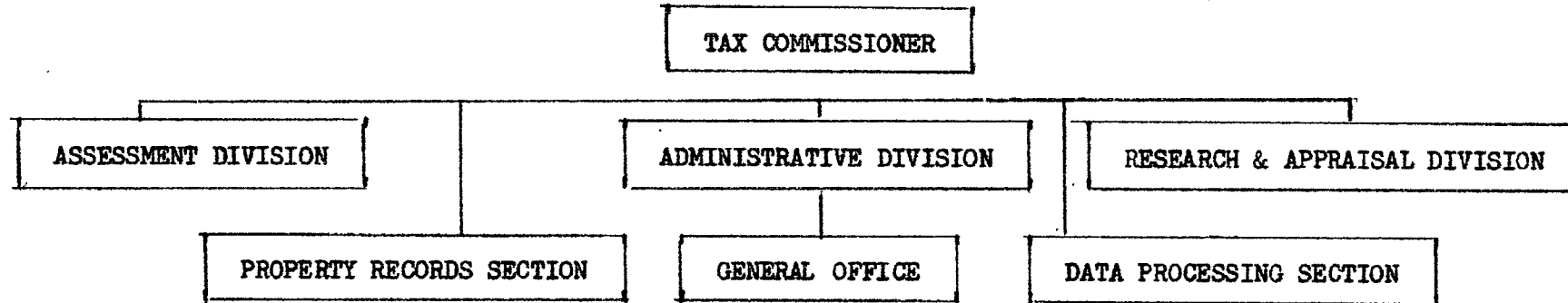
J. E. Fitzgibbon /s/
J. E. Fitzgibbon, Commissioner

Arvid Anderson /s/
Arvid Anderson, Commissioner

MEMORANDUM ACCOMPANYING DIRECTION OF ELECTION

Milwaukee District Council 48 petitioned the Board to conduct a separate election among certain employees employed by the City of Milwaukee in the Tax Department. This request was contained in the petition filed by said labor organization, which petition also related to other employees of the Municipal Employer. The Tax Department is a separate department of the Municipal Employer. None of the parties raised an issue concerning the appropriateness of a collective bargaining unit consisting of only employees in the Tax Department. If a majority of the employees indicate a desire to be represented by Milwaukee District Council 48 and its Local No. 428 and Local No. 40, the employees in the Tax Department will have been considered to establish themselves as a separate collective bargaining unit.

The organization of the Tax Department is as follows:



Eligibles

The parties stipulated that five (5) positions, occupied by six (6) incumbents, were supervisory and that one (1) position, occupied by one (1) incumbent was confidential, and therefore said positions and incumbents are to be excluded from the eligibles in any voting group. Nine (9) additional positions, filled by twenty-seven (27) incumbents, were claimed to be supervisory by the Municipal Employer. The Board concludes that seven (7) of the positions, occupied by ten (1) incumbents, are also supervisory. The following positions and incumbents thereof are supervisory and are to be excluded from the eligibles:

TAX COMMISSIONER

(s) Tax Commissioner (Byrne)
(s) Dep. Tax Com. (Erbach)
(xs) Supvr. Review Appr. (Couzens)

ASSESSMENT DIVISION

(s) Chief Assessor (Jendusa)
(s) Supvr. Assessor (Schwanke,
Waldhuetter)
(xs) Supvr. Ind. Assessor
(Miller, Kamens)
(xs) Supvr. Per. Prop. Assessor
(Multra, Wultz)

ADMINISTRATIVE DIVISION

(s) Admin. Asst. IV (Suits)

RESEARCH & APPRAISAL DIVISION

(xs) Chief Appraiser (Boucha)
(xs) Supvr. Appr. (Kornreich)

PROPERTY RECORDS SECTION

(xs) Prop. Rec. Supvr. (Janda)

GENERAL OFFICE

(xs) Admin. Asst. I (Krysinski)
(c) Clerk Steno. IV (Vukovich)

DATA PROCESSING SECTION

(xs) Admin. Asst. III (Bogumill)

Voting Groups and Units

The incumbents of the following positions are eligible in the Tax Department voting group:

ASSESSMENT DIVISION

Tax Assessor
Property Appraiser II, I
Person Property Assessor II, I
Assessment Tech.
Accountant I

PROPERTY RECORDS SECTION

Prop. Rec. Drafts. IV, III, I

GENERAL OFFICE

Clerk IV
Account Clerk I
Clerk Steno. III, II
Clerk Typist III, II, I

DATA PROCESSING SECTION

Tab. Equip. Op. III, II, I
Key Punch Op. II

RESEARCH & APPRAISAL DIVISION

Property Appraiser II, I

Dated at Madison, Wisconsin this 28th day of February, 1963.

WISCONSIN EMPLOYMENT RELATIONS BOARD

By Morris Slavney /s/
Morris Slavney, Chairman

J. E. Fitzgibbon /s/
J. E. Fitzgibbon, Commissioner

Arvid Anderson /s/
Arvid Anderson, Commissioner

(s) Indicates positions agreed to be supervisory.
(c) Indicates position agreed to be confidential.
(xs) Indicates positions found by Board to be supervisory.